

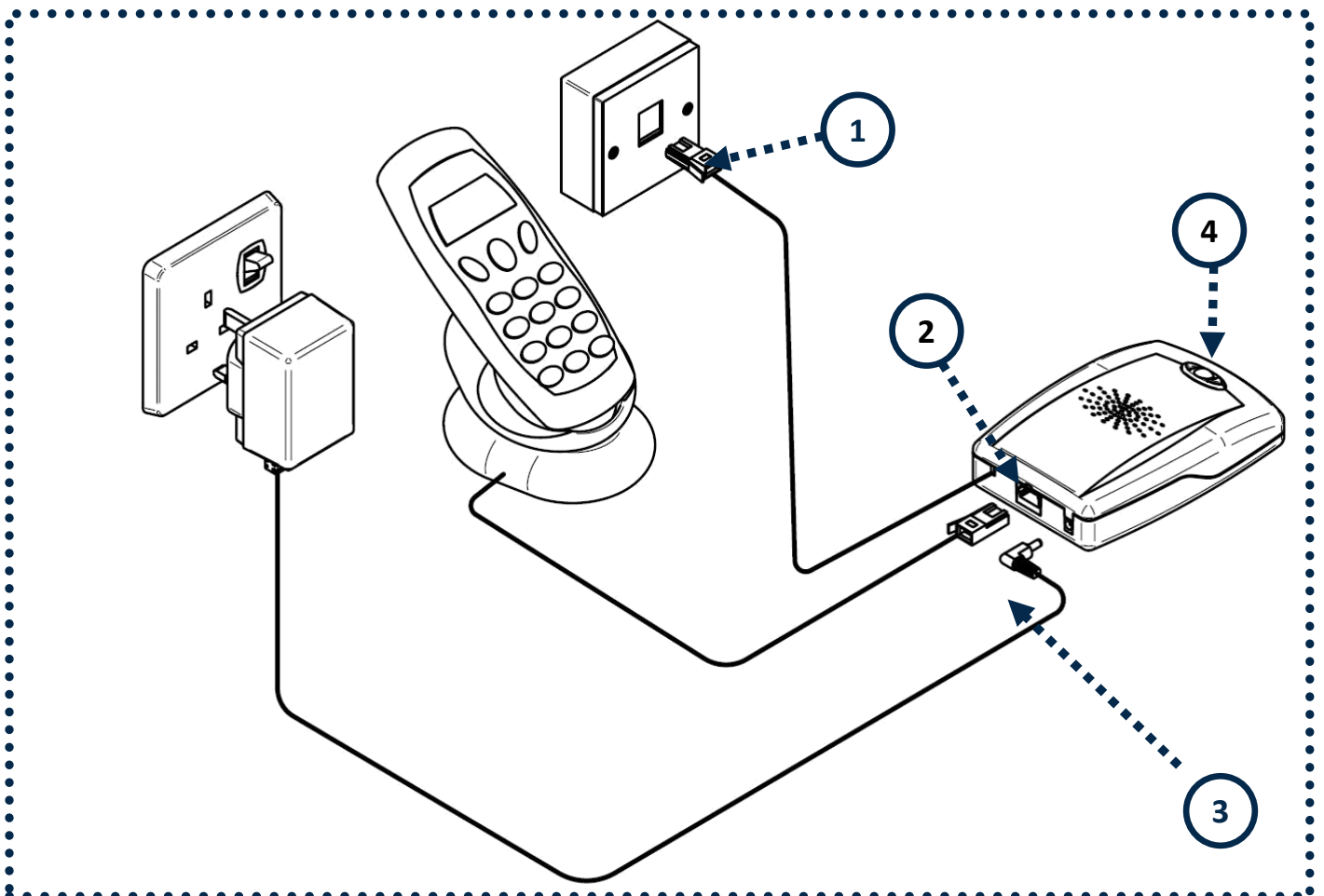
# Your quick start guide

## NATIONAL TRADING STANDARDS

Scams Team

### How to connect your trueCall unit in four easy steps

- 1 Unplug your telephone's lead from the wall socket (or from the broadband filter if you have broadband) and replace it with trueCall's lead
- 2 Plug your telephone's lead into the socket at the back of trueCall
- 3 Plug power supply into mains and trueCall
- 4 Unit powers up, LEDs flash and trueCall says "Ready"



# Your quick start guide

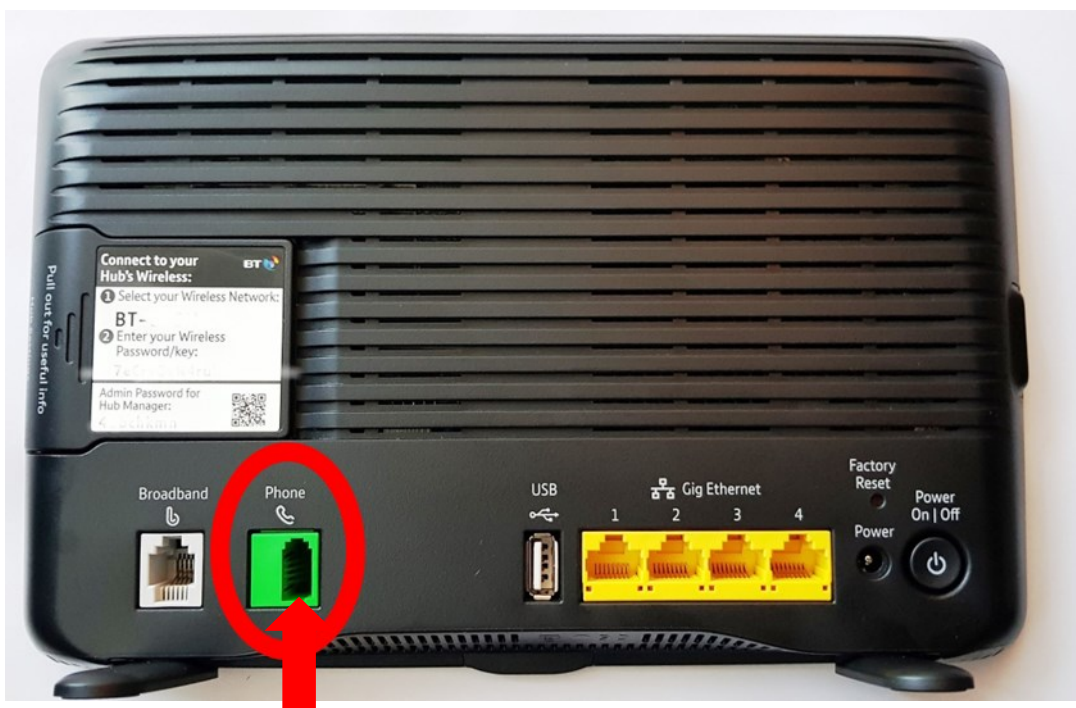
## NATIONAL TRADING STANDARDS

Scams Team

### How to connect your trueCall unit through your internet router

Over the next few years the telephone companies will be converting everyone's homes to have digital phone lines. This means that instead of plugging your phone into a telephone socket on the wall, you will plug it into a telephone socket in the back of your router (see the diagram below).

trueCall will continue blocking unwanted calls when plugged into a digital line. Just plug trueCall into your router, and your existing telephone handset into trueCall.



Plug trueCall  
in here